

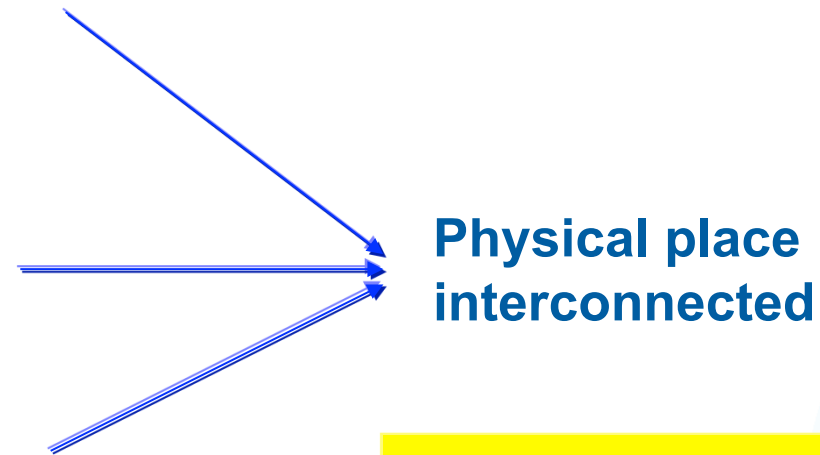
How Climate-KIC combines global and local dynamics for innovation :The example of the French collocation

Corinne Borel
5 july 2010



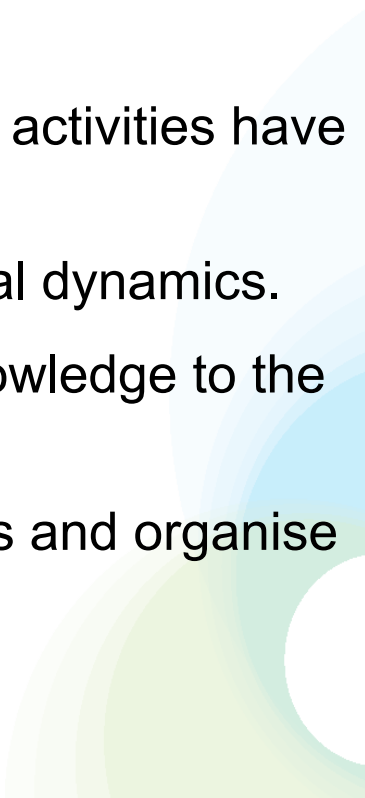
Climate-KIC

- **Attract** and **educate** Climate Change change agents and entrepreneurs
- Enable **productive dialogue** between companies, entrepreneurs and regions
- Stimulate climate change inspired **new economic activities**



**The Colocation
centers**

What is a colocation center

- **A development centre** for the KIC concept and KIC activities, and governance.
 - **A Place.** The CLC will provide physical facilities for the meetings and joint work of Climate-KIC partners, flagship projects and Climate-KIC entrepreneurs.
 - **A Fundraiser.** Synergy with national, regional funds
 - **An Innovator.** The CLC will ensure that local innovation activities have the support facilities and functions they need.
 - **An Educator.** education programme in synergy with local dynamics.
 - **A Communicator:** exchange and dissemination of knowledge to the public,
 - **An Administrator.** The CLC will manage node finances and organise local facilities and functions.
 - **An attractor** : mobility support
 - **A Partner for the whole CLCs.**
- 

Fr CLC : A Science and techno campus : Saclay Linked with Paris-Est thematic innovation cluster

the largest campus in France within 9km²

2b€ invested by Gvt :

10000 researchers/teachers,

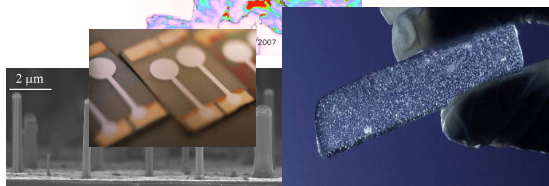
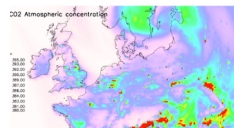
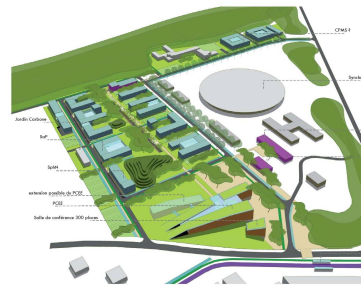
1500 PhD St

22000 students

180 patents/yr,

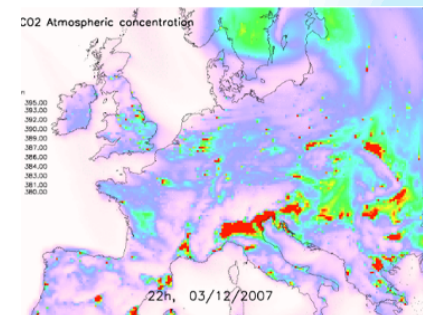
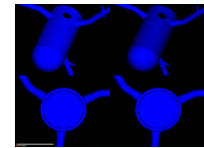
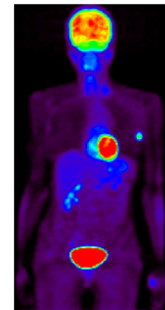
160 people for knowledge
transfer,

30 start-up/yr on all topics



A favorable environment for climate science and innovation in Saclay

- **Excellence of climate science** at the same area : IPSL
- **Interaction with energy, health, economy and social science** : GIS, PCEE
- **High-computing facilities** (PRACE)
- **Business partners in the same area** (Energy, ICT, automobile, ...) : competitiveness clusters (Systematics, Moveo, Advancity)
- And a **great political context : Campus action**



the Fr competitiveness clusters as a catalyst for Innovation within the KIC



Green Technologies and sustainable cities cluster

- 73 businesses (11 leading world-class companies)
 - 24 higher education and research establishments representing 150 laboratories and over 3,000 researchers,
 - 26 public authorities.
- **Getting together, innovating, undertaking projects**
 - **Vectors of excellence and strategic committees: the innovative projects factory**
 - Within three years, **more than 60 projects** selected and **funded** for a total investment **of €120 million in R&I.**

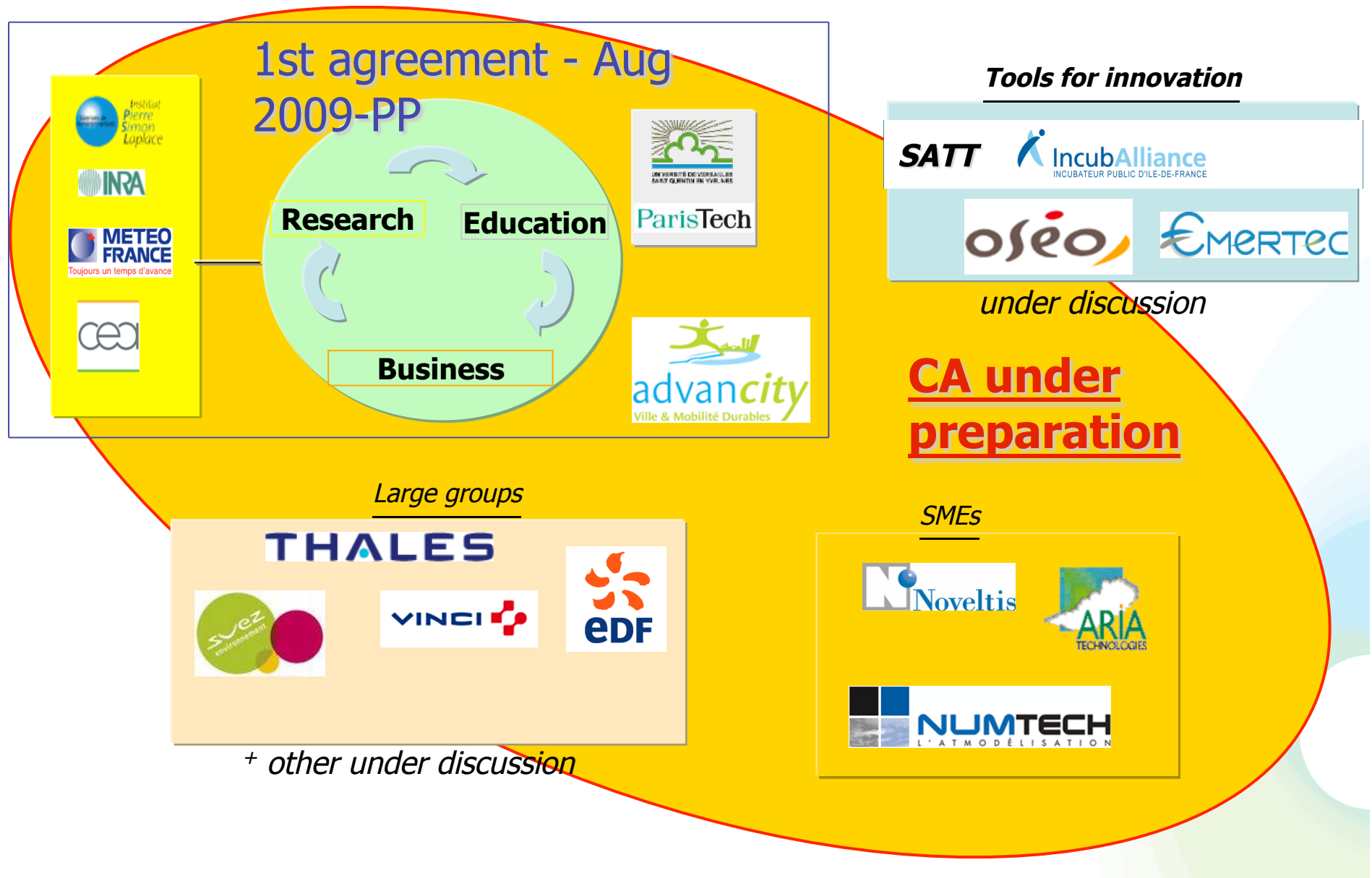


Fr CLC : other supports for Innovation



- **National agency for innovation : « OSEO »**, finance the various developments of SMEs in France. Oseo signed a Letter of intent to be an official partner of the CLC (aug09).
- **Incubators** : Incuballiance, Scientipol, Polystart, ...
- **SATT** projects: fund for valorisation 100M€..(incubation 100, techno-push maturation, market pull innovation-companies Partnership SMEs)
- **TTOs of research centers**: CEA–investissements, INRA-transfert,
- **VC** : *EMERTEC, DEMETER,*

CLIMATE-KIC-FR : A local ecosystem for the KIC Organisation



Fr CLC : a large climate related S&T expertise (1)

- **Climate Science and management**

- **data analysis for risk assessments**, in particular **extreme events** (IPSL, MeteoFrance, CEA)
- **projections relevant to regional adaptation and mitigation strategies** (IPSL, METEO-FRANCE, ParisTech)
- **Carbon cycle** and vulnerabilities analysis and modelling (IPSL, parisTech, Thales)
- **Regional GHG** budgets and emissions verification (IPSL, CEA, INRA, Tales)
- **Air quality and health impact evaluation and management** (ParisTech, IPSL)
- **Decision-making tools for ecosystem management strategies** (ParisTech, IPSL, AgroParisTech)

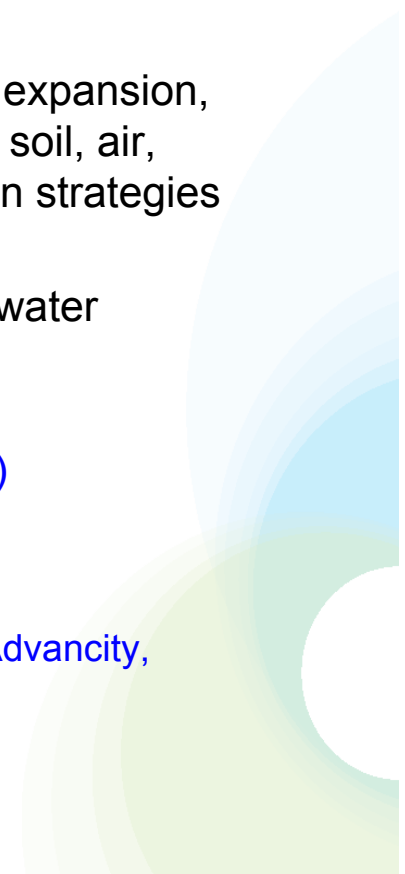
- **Development of technologies**

- **Physical and Chemical environment monitoring technologies** (IPSL, CEA, ParisTech, INRA, Thales)
- **Advanced space-borne monitoring of environmental changes, Instrumentation for Earth Observation** (IPSL, CEA, Thales)



Fr CLC : a large S&T expertise (2)

- **Energy and low carbon systems**
 - **Impact of climate change of energy resources** : Environmental impacts of energy production, renewable energy sources, geographical information systems for renewable energy sources, CO2 capture ([ParisTech](#), [CEA](#), [IPSL](#))
 - **Low carbon energy technology and systems** ([CEA ParisTech](#))
 - **CO2 CCU** ([ParisTech](#))
- **Landuse, agriculture and water**
 - **Integrated assessment of land use change impacts**: biofuels, urban expansion, mitigation of impacts of human activities protection of resources (water, soil, air, biodiversity,...), implementation of innovative and sustainable production strategies (food and non food) ([ParisTech](#), [UVSQ](#), [INRA](#), [IPSL](#))
 - **Water resources management** : water cycle, aquatic systems, ocean water resource, urban water resources infrastructures ([ParisTech](#), [IPSL](#), [SuezEnvironement](#))
 - **Agricultural adaptation and GHG mitigation** ([ParisTech](#), [INRA](#), [IPSL](#))
- **Urban development and transportation infrastructure** :
 - interactions transportation systems/infrastructures and urban/territorial planning ([Advancity](#), [ParisTEch](#), [UVSQ](#))



Fr CLC : our picture in 3 years



- **A KIC label effect**
 - New KIC education specific programmes with ParisTech and UVSQ : European added value for Saclay Education programmes
 - KIC added value for local supports for innovation : first KIC Eu start-ups.
- **A KIC leverage effect :**
 - consolidation of national funds (under discussion) in order to get a 50/50 (or more...) PPP for R&I.
- **A Eu top level competence and competitiveness cluster which :**
 - Launch 2 to 3 new large R&I collaborative projects between KIC partners.
 - Attract more Eu students and young people for new projects
 - Develop long term partnership with national or regional agencies
 - Act as a platform where stakeholders meet and discuss for strategic issues on climate change
- **A team :**
 - CLC as a management, service and resources center, with the whole needed expertise (fundraising, innovation)

end